

Infrastructure Newsletter

Update



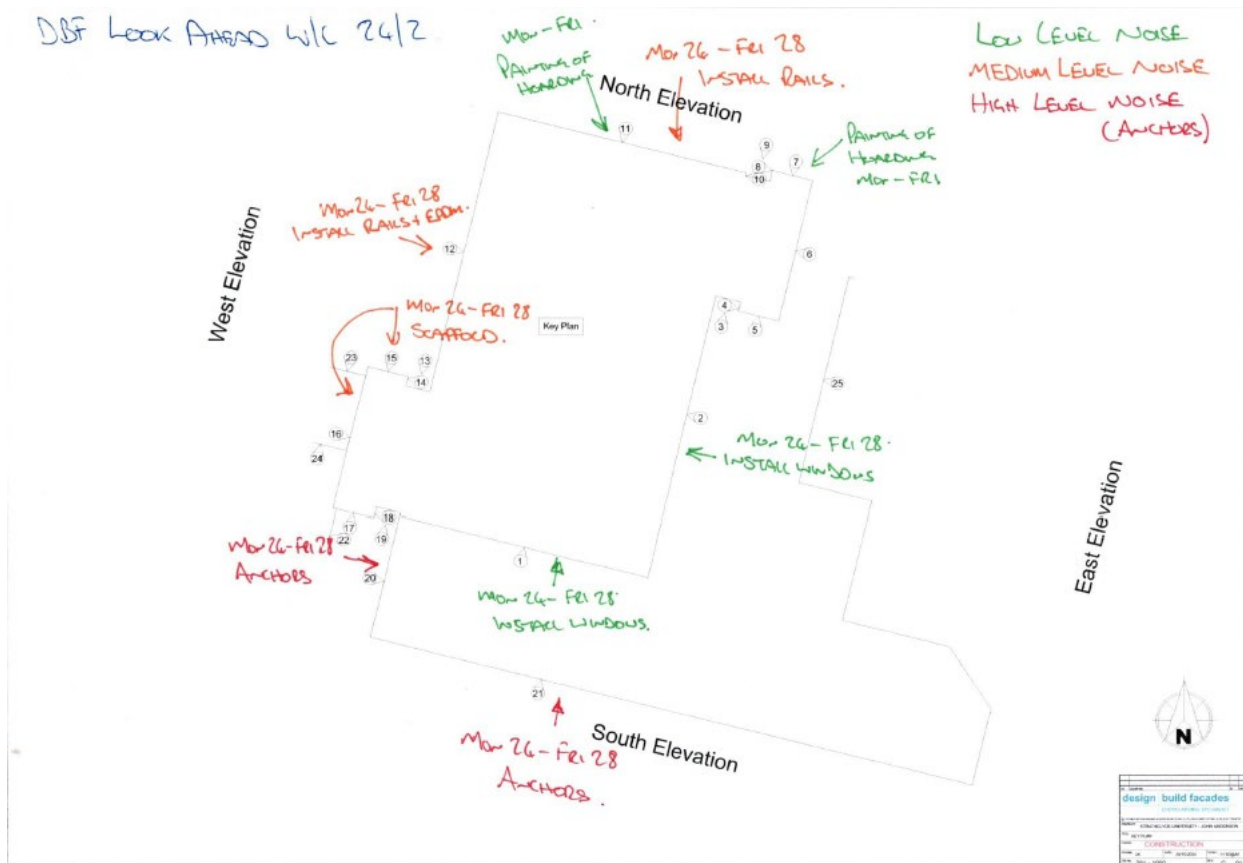
Cladding works

Below is a rough reschedule of the works for this week.

- See map below

W/C 24/02/25 – 02/03/25

- Elevation 20 & 21 (Levels 1-3), drilling and fitting anchors (Mon-Fri)
- Elevation 15 & 16 (South Tower), Scaffolding (Mon-Fri)
- Elevation 11 (North), installing rails (Mon-Fri)
- Elevation 12 (West), installing rails (Mon-Fri)
- Painting of wooden hording on levels 4 & 5



Internal works – Phase 1 (update)

Due to the works involved within the offices/ labs, everyone will be vacating their space for approximately 5 weeks for phase 1 works. Here are the estimated dates,

Level 8 (East and South), 10th March until 18th April (access will be available to JA813)

Level 8 (West and North), 21st April until 30th May (not 21st March to 30th April)

Level 7 (East and South), 24th March until 2nd May

Level 7 (West and North), 5th May until 13th June

Level 6 (East and South), 7th April until 16th May (access to be confirmed)

Level 6 (West and North), 19th May until 27th June (access to be confirmed)

Level 5, 30th June until 28th August (further details to be confirmed)

As before, all office furniture will be moved into storage and crates will be provided for your personal items. Contractors can pack your items for you. Filings cabinets can we left full.

Further details will be available soon regarding the level 6 labs.

The following rooms are available for hot desking,

- JA615, JA630 & JA715,
- CNQO areas JA718, JA729 & JA713 (after 2nd April)

Internal works – Phase 2

The works will involve replacing the ventilation in the corridors, risers and potentially the core rooms in certain area (to be confirmed)

Here are the estimated dates,

Level 8, 2nd June until 2nd July (access will be available to JA813)

Level 7, 5th June until 8th July

Level 6, 10th June until 11th July

Level 5, 11th July until 29th July

More details will be provided at a later date, but I am hoping to include as much as possible of these works within phase 1.

Deliveries

During the level 8 works, the location for deliveries will be confirmed soon.