

Infrastructure Newsletter

Update



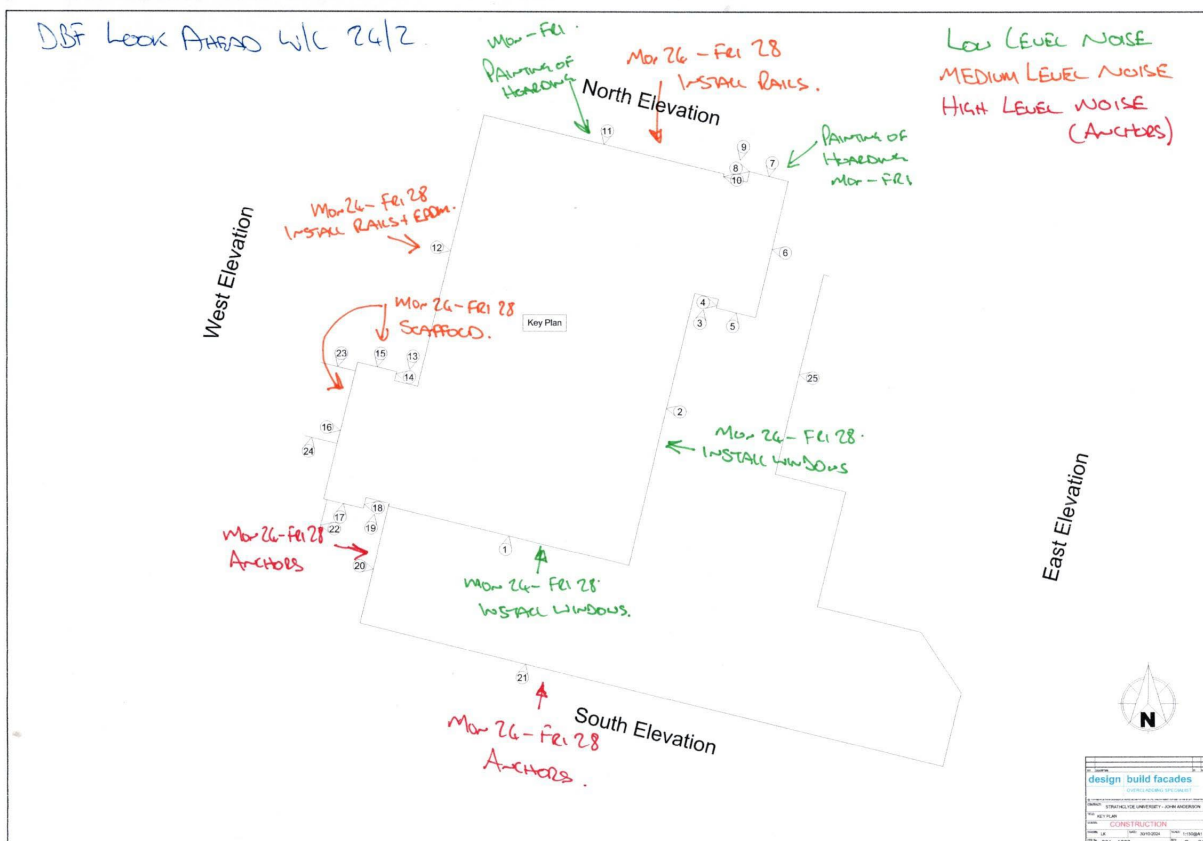
Cladding works

Below is a rough reschedule of the works for next week.

- See map below

W/C 03/03/25 – 09/03/25

- Elevation 1 & 2 (South and East), Installation of windows
- Elevation 7 & 11(North), painting of hoarding
- Elevation 12 (West), installing rails (Mon-Fri)
- Elevation 15 & 16 (South Tower), Scaffolding (Mon-Fri)
- Elevation 20 & 21 (Levels 1-3), drilling and fitting anchors (Mon-Fri)



Internal works – Phase 1 (update)

Due to the works involved within the offices/ labs, everyone will be vacating their space for approximately 5-10 weeks for the works. Here are the new estimated dates,

Level 8, 10th March until 30th May (access will be available to JA813)

Level 7, 7th April for 10 weeks

Level 6 (East and South), To be confirmed

Level 6 (West and North), To be confirmed

Level 5, To be confirmed

As before, all office furniture will be moved into storage and crates will be provided for your personal items. Contractors can pack your items for you. Filings cabinets can we left full.

Further details will be available soon regarding the level 6 labs.

The following rooms are available for hot desking,

- JA615, JA630, JA715 & JA412 (from 17th March)
- CNQO areas JA718, JA729

Internal works – Phase 2

We are hoping phase 2 works will be incorporated into phase 1.

Here are the estimated dates,

Level 8, 10th March until 30th May

Level 7, 7th April for 10 weeks

Level 6, 10th June until 11th July (to be confirmed)

Level 5, 11th July until 29th July (to be confirmed)

More details will be provided at a later date.

Deliveries

During the level 8 works, the location for deliveries and the Admin team will be confirmed soon.

