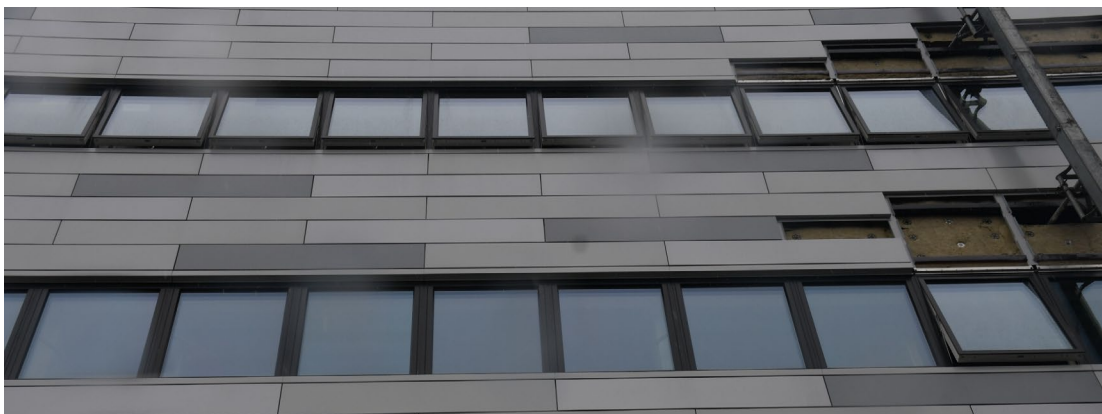
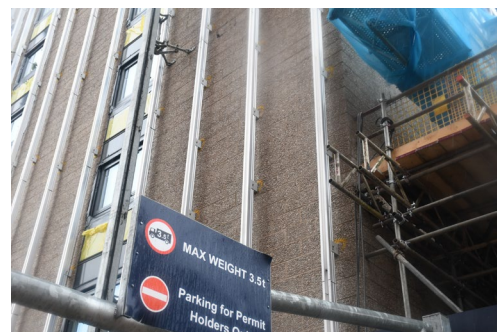
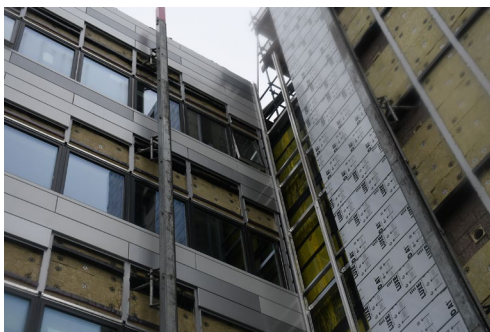


Infrastructure Newsletter

Update



External Works



Internal works

Level 8 works is currently scheduled to be completed by 30th May.

Level 7 works is currently scheduled to be completed by 16th June.

Level 6 Phase 1 works will start 5th May. Phase 2 works will start on the 30th June and will cover JA600, JA601, JA602, JA602a and JA603. All offices should schedule for decant next week. As before, all office furniture will be moved into storage, crates will be provided for personal items and filings cabinets can be left full. Contractors can pack your items for you. JA608 laser table and equipment will be moving to RW309 next week.

Level 5 Phase 1 works which consists of the teaching rooms has started and will be completed for the 13th June for the conference which runs between 23rd – 27th June. Phase 2 consists of all level 5 rooms which will start at the same time as Level 6 Phase 2 – 30th June. The Electronics Workshop works will start on the 5th May but it will remain open for business during the works. Most of the works will be at night or weekends.

Room relocation

Head of Department has moved to JA210

Reception/deliveries has moved to JA409

IT Support and the photocopiers have moved to JA413

My office (Technical Support and Safety Manager) has moved to JA600

The following rooms are available for hot desking,

- **JA512 and level 4 teaching labs**