

Global Engagements Briefing Session



December 2015

Prof Tim Bedford, Associate Deputy Principal for Knowledge
Exchange and Research Enhancement

Clare McLaren, International Engagement Coordinator, RKES

Agenda

1. Welcome & housekeeping
2. Strathclyde's International Strategy
3. Global Engagements overview
4. Application criteria
5. Case Study – Dr Andrea Hamilton
6. Wrap up

A Leading International Technological University



Our Vision

A leading international technological university, inspired by its founding mission, that makes a positive difference to the lives of its students, to society and to the world

Our Mission

From our foundation as ‘the place of useful learning’, we take it as our responsibility to research, teach and be of benefit to society – to reach outside the University to make the world better educated, prosperous, healthy, fair and secure

Strategic Themes

Outstanding student experience

Internationally-leading research

World-leading innovation and impact

Cross-cutting Themes

Global engagement

Operational excellence

Our Values

People-oriented

Bold

Innovative

Collaborative

Ambitious

A Leading International Technological University

Our Vision

A leading international technological university, inspired by its founding mission, that makes a positive difference to the lives of its students, to society and to the world



Internationally leading research



Challenges to be addressed by research are global in nature

Critical source of funding (e.g. Newton, Development Funds) while national sources declining

Research with high impact

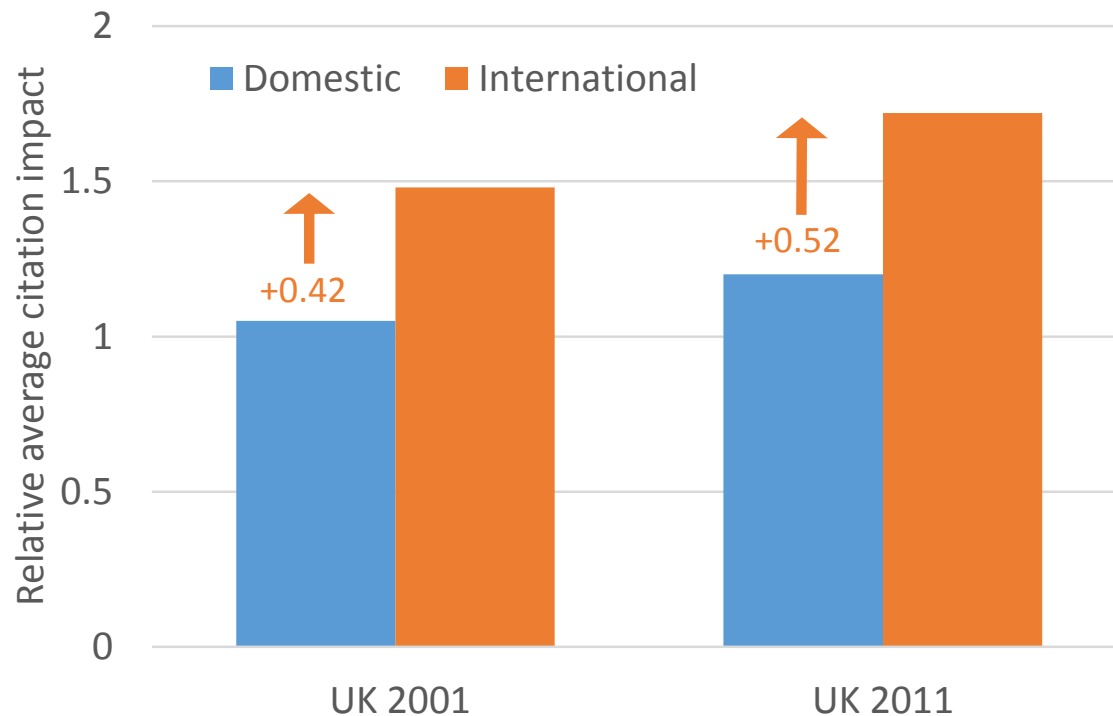
Increased citation impact

Enhanced global reputation

Impact Premium of International Research

Impact Premium

In the UK papers with at least one author from another country are cited more often than purely domestic work



International Strategic Partnerships



Stanford University

- One of the world's leading teaching and research universities located in the heart of California's Silicon Valley



Nanyang Technological University

- The number one fastest-rising university in the world (THE)



NEW YORK UNIVERSITY

New York University

- Leading international university with campuses in New York, Abu Dhabi, and Shanghai and operates 11 global academic centres



Tsinghua University

- One of China's most renowned universities based in Beijing



Massachusetts Institute of Technology

- the top ranked university in the world (QS World Universities)



HKUST

- an international research centre and 7th fastest-rising university in the world (THE)

ETH zürich



Technical University of Denmark

CESA**ER**

conference of european schools
for advanced engineering education
and research



Global Engagements Fund

Aims



Increase the level and number of **sustainable** Global Engagement's between the University of Strathclyde and leading research groupings worldwide



Increase funding income through International Research Grants



Increase research / consulting funding through developing relationships with International Organisations



Increase awareness of the University of Strathclyde and its research worldwide



Global Engagements - funding available

- £80K for 2015/2016 (circa £27K spent)
- £1-5K per application
- No deadlines
- Funds must be spent within 1 year

Global Engagements - application form

2. Outline of the proposed partnership		
2.1 Name and address of partner institution/organisation and key contact.		<input type="checkbox"/> Emerging/new relationship
		<input type="checkbox"/> Developing relationship
		Expected date of visit:
2.2 Existing Strategic Partner?		
2.3 Please provide evidence of the research excellence of the partner institution/group/organisation.	<ul style="list-style-type: none"> • QS world rankings • THE world rankings • Number of papers published in top journals • Number of citations etc 	

Global Engagements - application form

2. Outline of the proposed partnership

2.5 Are you aware of any broader engagements between Strathclyde and the partner institution/organisation? Please give details.

If you are not aware of any current broader engagement, is there a potential for this to happen as part of this overall GE-supported interaction, and, if so, how will your proposal enable this?

- Desk research required before submitting application
- Where there is scope to broaden the engagement applications will be looked upon more favourably

2.6 Detail the specific activities, including timescales, explaining what will be undertaken and the aims/objectives of these.

- Workshops
- Meetings
- Identifying / writing grant applications etc.

Global Engagements

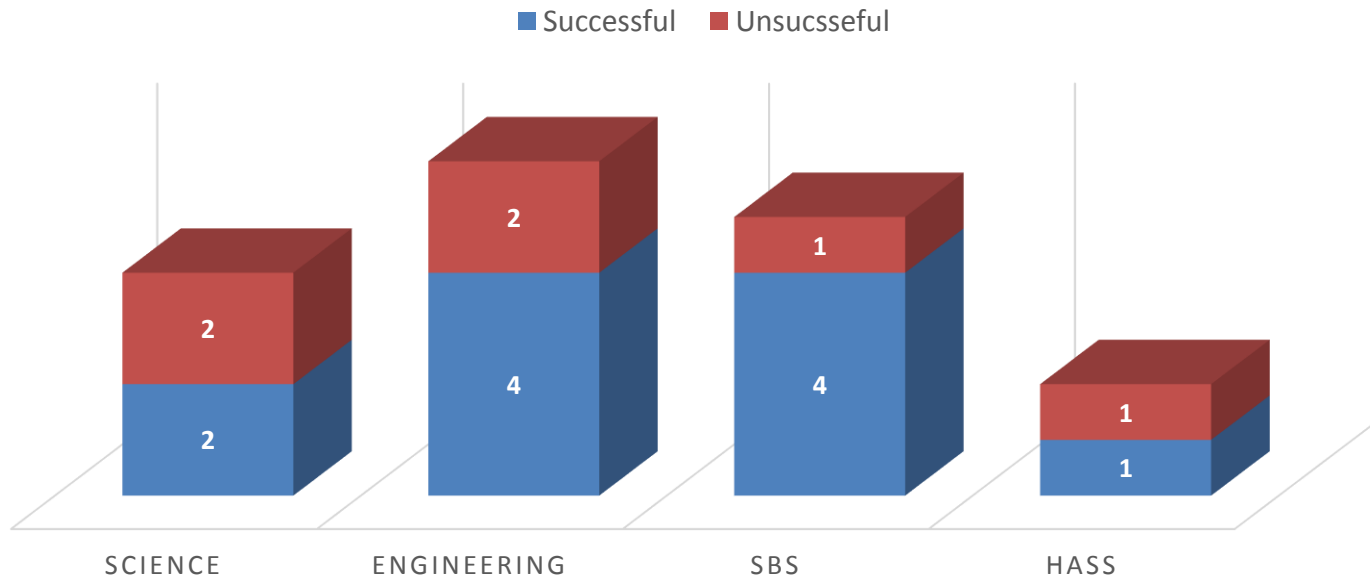
- application form

2. Outline of the proposed partnership		
2.7 Please detail the intended outcomes both short and long term.	<ul style="list-style-type: none"> • Be specific <ul style="list-style-type: none"> • E.g. what funding call(s) are you targeting • Timescales 	
3. Funding		
3.1 Please include a full breakdown of costs and justification of these.	<p><i>Costs being covered by other sources should also be detailed here.</i></p> <ul style="list-style-type: none"> • No direct research costs • No conference costs • Usually travel and subsistence 	
3.2 Amount of funding requested from the GE fund and amount provided from other sources	<p>Funding requested from GE:</p> <ul style="list-style-type: none"> • Contribution needs to be at least 30%, higher for an inward trip 	<p>Details of co-funding:</p>

Global Engagements - statistics 2014/15

65% success rate

APPLICATION SUCCESS RATE BY FACULTY



Global Engagements - how to apply

- Application form available from R&KE Portal
- Submit at any time
- Aim to respond within 2 weeks
- Contact : clare.mclaren@strath.ac.uk

Global Engagements

Case study

Dr Andrea Hamilton

Director of Research

Civil and Environmental Engineering

Andrea Hamilton

**Senior Lecturer/Director of Research Civil and
Environmental Engineering**

GE funds for visit to Hong Kong
Universities

Aims

- To build on existing connections: Adjunct Professor in Architecture at Chinese University of Hong Kong by making contact with more departments in other Universities with the aim of developing a real collaboration. Visit took place in January 2015



Design at Hong Kong Polytechnic University (PolyU)

Civil Engineering at Hong Kong University (HKU)

Physics and Earth Sciences at HKU

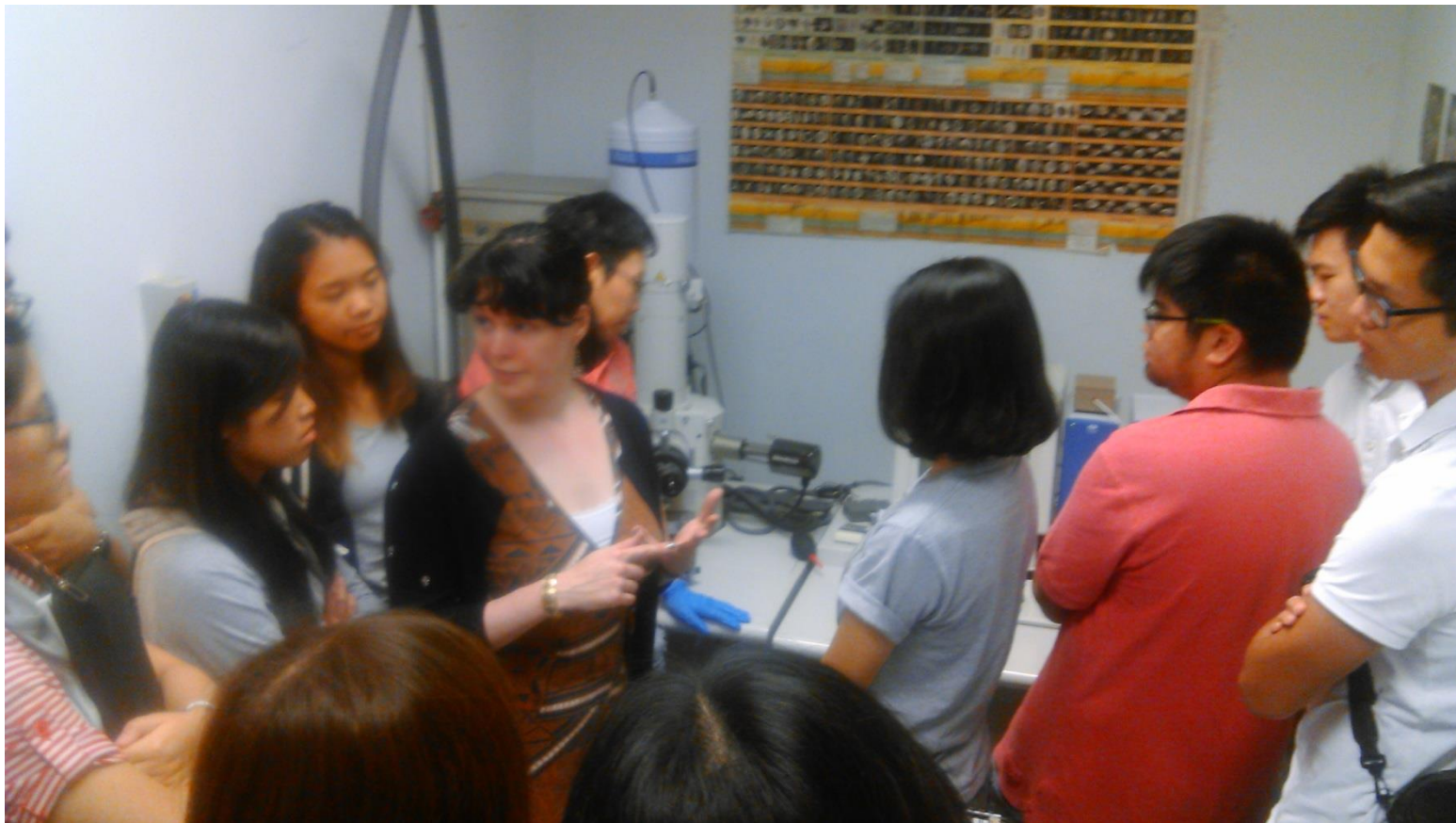
Architecture at HKU

Outcome

- Significant field work with CUHK and also HKU in concrete/building deterioration.
- Offered another adjunct position at HKU (Architecture)
- A second visit in October 2015 to HKU (Architecture)



- Group lecture in Earth Sciences and Architecture (HKU)
- 4 hour public workshop on concrete conservation invited and given
- Publications planned plus an extended networking visit to Tongji University (China) planned from contacts made.



plus more field work in high places!



Contact for enquiries

- Clare McLaren – International Engagement Co-ordinator (RKES)
 - clare.mclaren@strath.ac.uk



University of **Strathclyde** **Glasgow**