



The English-Speaking Union

## LINDEMANN TRUST FELLOWSHIPS

### NOTES FOR APPLICANTS

#### ABOUT

The English-Speaking Union offers up to three grants a year worth \$30,000 each for postdoctoral scientists to carry out research in the USA. The Lindemann Trust Fellowships are awarded to graduates of exceptional promise in both the pure and applied physical sciences who have shown capacity for producing original research.

#### BRIGADIER CHARLES LINDEMANN

The ESU has offered the Lindemann Trust Fellowships since March 1972, following a bequest of £1,000,000 from Brigadier Charles Lindemann. Born in Scotland, Brigadier Lindemann trained as a physicist with his brother Lord Cherwell in Berlin, before serving in the British Army during the First World War, and at the British Embassy in Washington during the Second World War. In his will, Brigadier Lindemann directed that his residual estate be used to assist men and women with outstanding potential to become distinguished scholars or teachers in their chosen field.

#### ELIGIBILITY

To be eligible to apply, candidates must meet the following criteria:

- British or Commonwealth citizenship
- Resident in the UK
- Completed a doctorate since September 2013, or be expecting to complete by 30 September 2015 at the latest
- Holders of established research and lecturing posts with a proven record may apply, but the Fellowship should not be regarded as a means of taking up a routine sabbatical.
- Fellowships may not be held concurrently with any other research grant or scholarship

Fellowships may be taken up from September 2015, and by 18 April 2016 at the latest. Each Fellowship lasts for one year. The Lindemann Trust supports research in the fields of **Astronomy, Biophysics, Chemistry, Engineering, Geology, Geophysics, Mathematics and Physics.**

#### APPLICATION PROCESS

The 2015-16 application closing date is **Monday 16 February 2015**. Completed application forms should be returned by email to [education@esu.org](mailto:education@esu.org).

Candidates are responsible for ensuring that **two** confidential academic references are sent separately to the ESU before the application closing date. It could be to the candidate's advantage to provide at least one reference that is independent of the candidate's current institution. Candidates must also provide a letter of endorsement from their chosen US institution, stating that the institution is able to provide the appropriate facility for the candidate to undertake their proposed research.

References may be emailed to [education@esu.org](mailto:education@esu.org), or posted to The Education Department, ESU, Dartmouth House, 37 Charles Street, London W1J 5ED. An electronic version of the reference form is available at [www.esu.org/lindemann](http://www.esu.org/lindemann).

Interviews for shortlisted candidates will be held on **Tuesday 14 April 2015** at Dartmouth House, the International Headquarters of the ESU in London.

## WHAT DOES A FELLOWSHIP COVER

The Lindemann Trust Fellowships enable postdoctoral scientists to pursue research in the USA without financial difficulty, and without being obliged to take up paid employment (except for incidental teaching if applicable). Recent fellows have pursued research at universities and research institutions across the USA, including Harvard, Stanford, Duke, the Dana Farber Cancer Institute, and the Massachusetts Institute of Technology. Alumni include Professor Roger Davies (former President of the Royal Astronomical Society) and Sir Graham Hills (physical Chemist and former Governor of the BBC).

Each fellowship amounts to \$30,000 per annum, paid quarterly by the ESU in equal instalments of \$7500 each. Fellows are asked to notify the ESU at least three weeks before the next instalment is due. In addition, the ESU contributes £500 towards each Fellow's airfare, which may be used for an outward or return flight. Fellows must liaise with the ESU before booking their outward flight. You are responsible for obtaining appropriate insurance cover for your Fellowship in the USA.

## WHEN COULD I TAKE UP MY FELLOWSHIP?

Fellowships may be taken up from September 2015, and by 18 April 2016 at the latest. Each Fellowship lasts for one year. Fellows are expected to return to the UK within two years of the conclusion of their Fellowship for a period of at least two years. Applications for exemption from this ruling must be made to the Lindemann Trust Fellowships Committee.

## VISAS

It is the Fellow's responsibility to obtain a visa for the year in the USA. Fellows should liaise with their host institution in the USA, which will provide the necessary documentation for obtaining the relevant visa. We recommend that Fellows leave plenty of time to arrange the visa as recent changes in regulations have made the process a lengthy one.

## CONDITIONS

The conditions of each Fellowship are as follows. Fellows are required to:

- Provide the ESU with a satisfactory Certificate of Health from a GP before departing for the US.
- Take up their Fellowship by 18 April 2016, and inform the ESU of their intended start date as soon as they have it.
- Inform the English-Speaking Union of their planned date of return to the UK.
- Return to the UK within two years of the conclusion of their Fellowship for a period of at least two years. Applications for exemption from this ruling must be made to the Lindemann Trust Fellowship Committee.
- Send the ESU two short reports (750 words each) on their research and experiences, the first before April 2016, and the second within a month of completing their Fellowship.
- Send the ESU copies of any research papers that result from their Fellowship.
- Fully acknowledge their Lindemann Trust Fellowship in all papers and reports produced as a result of research carried out during the Fellowship.
- Become ESU members for at least one year on their return to the UK. Membership is free for under 23 year olds. A Fellow may be invited to give a talk at an ESU event.

## THE COMMITTEE

In commemoration of his brother's membership of Christ Church and Wadham Colleges, and the Royal Society, Brigadier Lindemann asked that they be specially represented on the selection committee:

### *Chairman*

The Earl of Stockton

### *Representatives of Christ Church, Oxford*

Dr Martin Grossel MA PhD

Professor Roger Davies BSc PhD

### *Representatives of Wadham College, Oxford*

Professor Iain Hunter  
Dean  
Faculty of Science  
University of Strathclyde



The English-Speaking Union

23 October 2014

## LINDEMANN TRUST FELLOWSHIPS 2015-2016

APPLICATIONS NOW OPEN – CLOSING DATE: MONDAY 16 FEBRUARY 2015

The English-Speaking Union offers up to three grants a year worth \$30,000 each for postdoctoral scientists to carry out research in the USA. I would be very grateful if you could make the enclosed information available to your students and encourage them to apply.

The Lindemann Trust Fellowships are awarded to graduates of exceptional promise in both the pure and applied physical sciences who have shown capacity for producing original research. These Fellowships enable postdoctoral scientists to pursue research in the USA without financial difficulty, and without being obliged to take up paid employment.

The Lindemann Trust supports research in the fields of:

- Astronomy
- Biophysics
- Chemistry
- Engineering
- Geology
- Geophysics
- Mathematics
- Physics

Dartmouth House  
37 Charles Street  
London W1J 5ED

T +44 (0)20 7529 1550  
F +44 (0)20 7495 6108  
[www.esu.org](http://www.esu.org)

To be eligible to apply, candidates must be British or Commonwealth citizens, resident in the UK, and have completed a doctorate **since September 2013**, or be expecting to complete **by 30 September 2015 at the latest**. Holders of established research and lecturing posts with a proven record may apply, but the Fellowship should not be regarded as a means of taking up a routine sabbatical.

*The English-Speaking Union of the Commonwealth,  
incorporated by Royal Charter,  
is a Registered Charity  
No. 273136.*

The deadline for applications is **Monday 16 February 2015**. Please visit [www.esu.org/lindemann](http://www.esu.org/lindemann) for more information where applicants can also see our *Notes for Applicants* for full details on the fellowships and application process.

Do also let me know if you would like further leaflets and posters on this Fellowship.

Many thanks,

Emma

--

Emma Coffey

Education Programmes Officer  
*The English-Speaking Union*

ddi: +44 (0) 207 529 1590

w: [www.esu.org](http://www.esu.org)

Professor Paul Beer MA PhD  
Professor David Edwards MA PhD CEng FIET (FRAS)

*Representative of the Royal Society*  
Professor Sir David Read BSc PhD FRS

*Representative of the ESU*  
Professor Sir Roger Penrose, OM FRS

For more information, please see:

w: [www.esu.org/lindemann](http://www.esu.org/lindemann)

e: [education@esu.org](mailto:education@esu.org)

t: +44 (0)20 7529 1550

# LINDEMANN TRUST FELLOWSHIPS

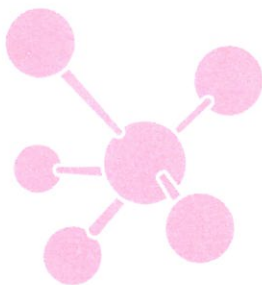
The English-Speaking Union offers fellowships of \$30,000 each for postdoctoral scientists to carry out a year of research in the USA. Following a bequest from Brigadier Charles Lindemann in 1972, the ESU has awarded the Lindemann Trust Fellowships to talented young scientists in both the pure and applied physical sciences who demonstrate the capacity for original research.

Recent fellows have pursued research at universities and institutions across the USA, including Harvard, Stanford, Duke, the Dana Farber Cancer Institute, and the Massachusetts Institute of Technology. Alumni include Professor Roger Davies (former President of the Royal Astronomical Society) and Sir Graham Hills (physical Chemist and former Governor of the BBC).

We support research in the fields of:

- Astronomy
- Biophysics
- Chemistry
- Engineering
- Geology
- Geophysics
- Mathematics
- Physics

For more information:  
w: [www.esu.org/lindemann](http://www.esu.org/lindemann)  
e: [education@esu.org](mailto:education@esu.org)



## Eligibility

- British or Commonwealth citizenship
- Resident in the UK
- Completed a doctorate since September 2013, or be expecting to complete by 30 September, 2015 at the latest
- Holders of established research and lecturing posts with a proven record may apply, but the Fellowship should not be regarded as a means of taking up a routine sabbatical.
- Fellowships may not be held concurrently with any other research grant or scholarship.
- Fellowships may be taken up from September 2015, and by 18 April 2016 at the latest. Each Fellowship lasts for one year.

## The Committee

In commemoration of his brother's membership of Christ Church and Wadham Colleges at Oxford, and the Royal Society, Brigadier Lindemann asked that they be specially represented on the selection committee:

### Chairman

The Earl of Stockton

### Representatives of Christ Church, Oxford

Dr Martin Grossel MA PhD

Professor Roger Davies PhD FRAS

### Representatives of Wadham College, Oxford

Professor Paul Beer MA PhD

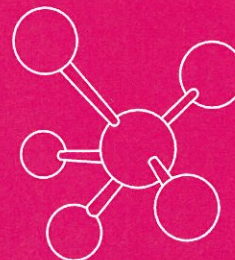
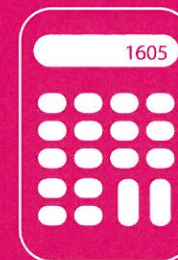
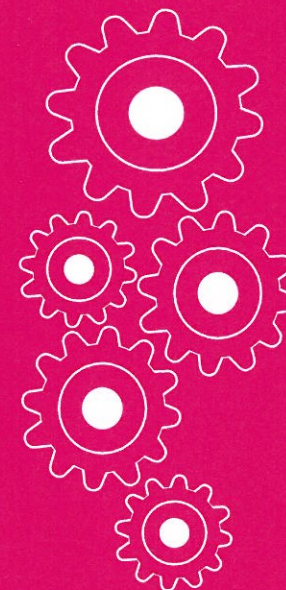
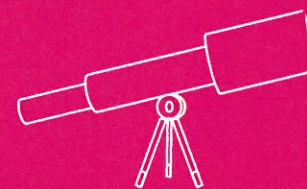
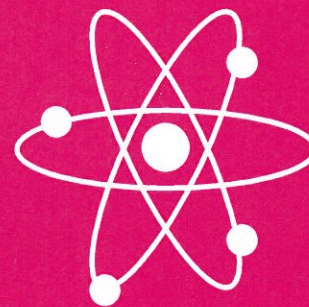
Professor David Edwards MA CEng FIET FRAS

### Representative of the ESU

Professor Sir Roger Penrose OM FRS

# LINDEMANN TRUST FELLOWSHIPS

*Post-doctoral research grants to the USA for scientists*

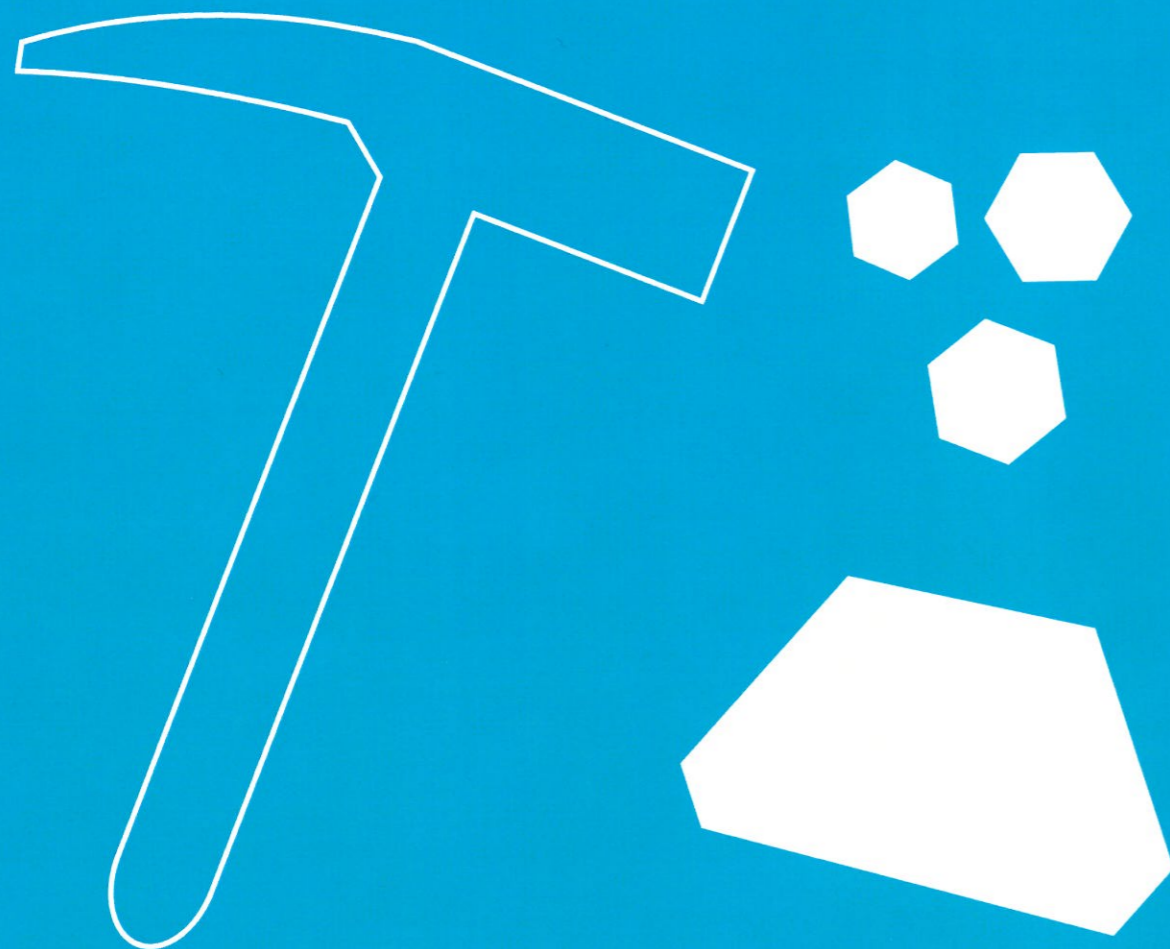


The English-Speaking Union

[www.esu.org/lindemann](http://www.esu.org/lindemann)

# LINDEMANN TRUST FELLOWSHIPS

*Post-doctoral research grants to the USA for scientists*



*We support research in the fields of:*

**ASTRONOMY  
BIOPHYSICS  
CHEMISTRY  
ENGINEERING**

**GEOLOGY  
GEOPHYSICS  
MATHEMATICS  
PHYSICS**

For more information:  
**w:** [www.esu.org/lindemann](http://www.esu.org/lindemann) **e:** [education@esu.org](mailto:education@esu.org)



The English-Speaking Union

# LINDEMANN TRUST FELLOWSHIPS

*Post-doctoral research grants to the USA for scientists*



*We support research in the fields of:*

**ASTRONOMY  
BIOPHYSICS  
CHEMISTRY  
ENGINEERING**

**GEOLOGY  
GEOPHYSICS  
MATHEMATICS  
PHYSICS**

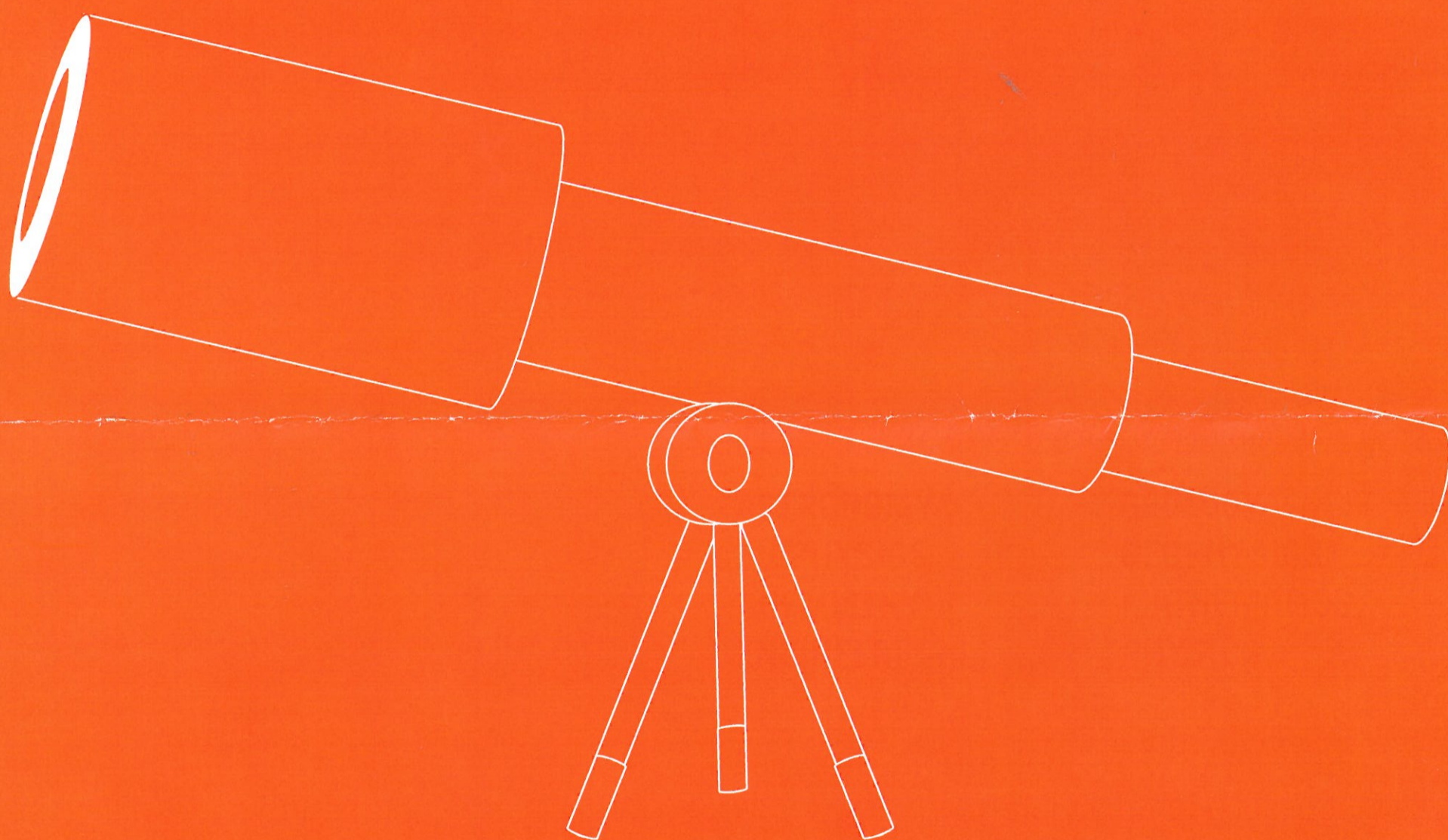
For more information:  
**w:** [www.esu.org/lindemann](http://www.esu.org/lindemann) **e:** [education@esu.org](mailto:education@esu.org)



The English-Speaking Union

# LINDEMANN TRUST FELLOWSHIPS

*Post-doctoral research grants to the USA for scientists*



*We support research in the fields of:*

**ASTRONOMY  
BIOPHYSICS  
CHEMISTRY  
ENGINEERING**

**GEOLOGY  
GEOPHYSICS  
MATHEMATICS  
PHYSICS**



The English-Speaking Union

For more information:

**W:** [www.esu.org/lindemann](http://www.esu.org/lindemann) **e:** [education@esu.org](mailto:education@esu.org)